

Shepherd is committed to prioritizing **EXCELLENCE IN THE CAGE**, by categorizing our products into the three performance categories below.

## Research Integrity

Enviro-dri® is the material of choice to ensure the elimination of bedding derived confounding variables from nesting materials.

- Ensures outstanding thermoregulation
- Always consistent
- No limb entanglement
- Low dust levels



## Animal Health & Welfare

These animals give their lives for the medical advancements for millions of people. In return, we at Shepherd believe it is our duty to provide nesting material that encourages species-specific behaviors and overall health.

Enviro-dri® is an effective nesting additive in support of this formidable goal.

- Rodents build a complex high quality nest
- Amplifies species-specific behaviors
- Made for easy custom dosing
- A safe nesting choice



learn more

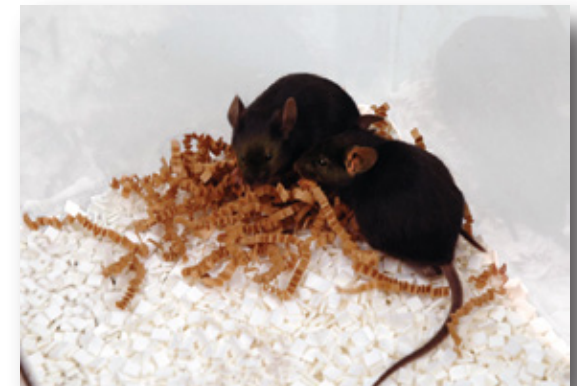


## Operational Productivity

Nesting material is crucial to the health and welfare of the animals and the research goals of the investigators.

Enviro-dri® 's economical cost, unique characteristics, and overall performance supports facility wide usage.

- Packed loosely; easy for custom dosing
- Most economical nesting material
- Low dust levels
- Available in two grades (white & brown) & irradiated
- Easy disposal



## DID YOU KNOW?



**Each “piece” of Enviro-dri is composed of three strands.**

[learn more](#)



## SIGN UP FOR OUR QUARTERLY NEWSLETTER



## CONTACT US

### SALES

**René Ketelsen**  
e: rketelsen@ssponline.com

**Terry Burns-Heffner**  
e: tbheffner@ssponline.com

**Bob Bentzinger**  
e: bbentzinger@ssponline.com

### CUSTOMER SERVICE

t: (800) 382-5001  
e: customerservice@ssponline.com

# Enviro-dri®

**A better nesting material that does NOT contain variable substances that are harmful to your research models.**



Excellence  
In The Cage  
Starts Here®